

State of Wyoming Corner Record

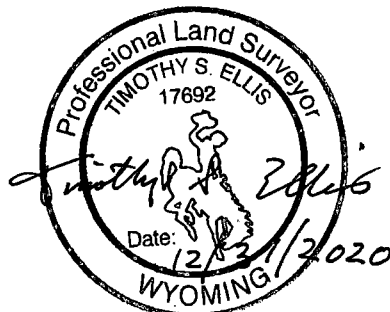
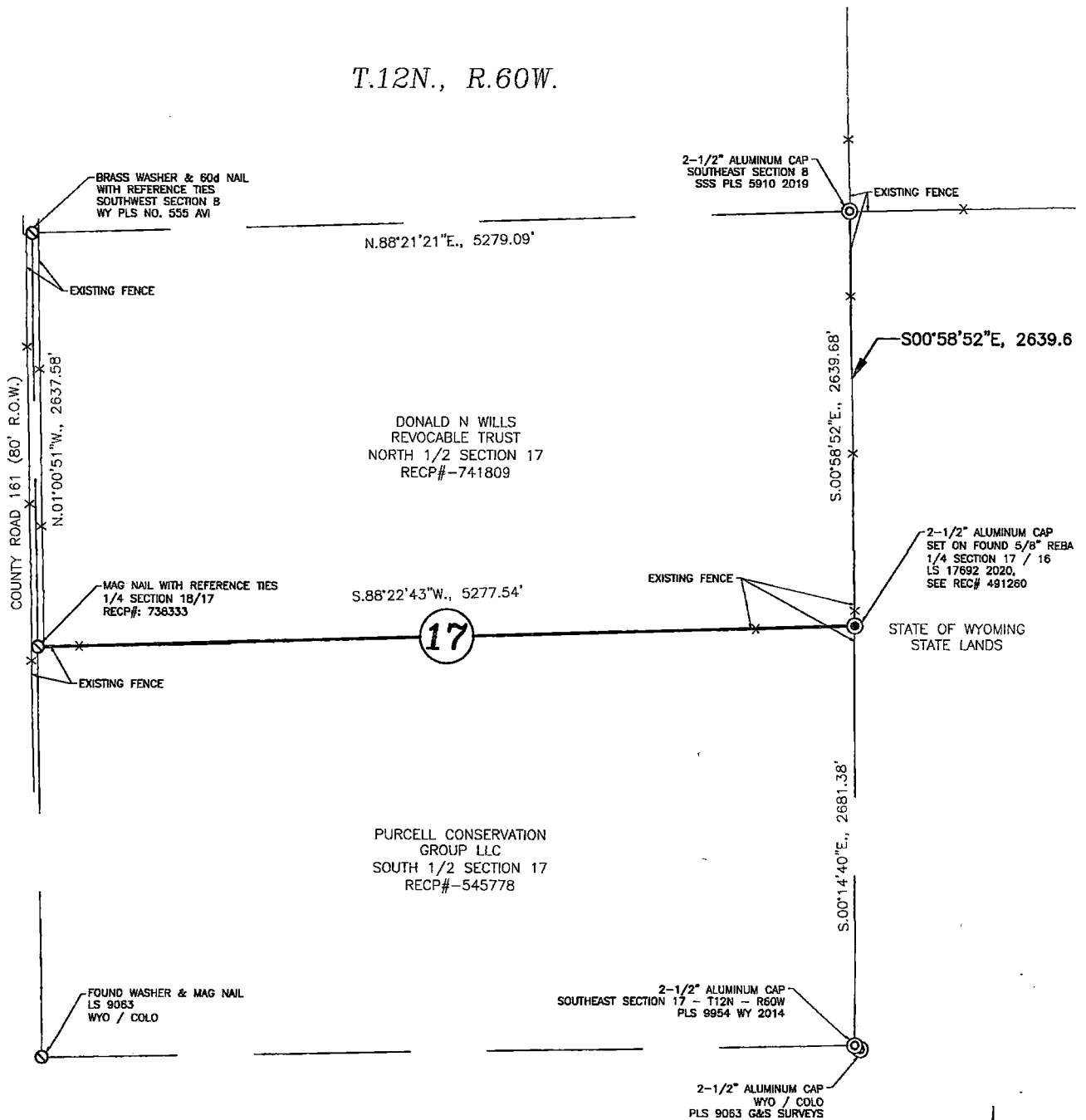
Page 2



RECP #: 799668

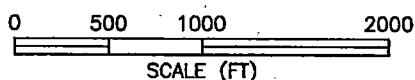
RECORDED 1/15/2021 AT 9:10 AM BK# 2715 PG# 6
Debra K. Lee, CLERK OF LARAMIE COUNTY, WY PAGE 2 OF 2

T.12N., R.60W.



LEGEND

- FOUND WASHER & NAIL NAIL AS NOTED.
- ⊙ FOUND CORNER MONUMENT AS NOTED.
- ⊙ SET 2.5" ALUMINUM CAP ON 5/8"x24" REBAR. LS 17692, 2020



BASIS OF BEARINGS

BEARINGS ARE BASED ON THE WYOMING COORDINATE SYSTEM 1983 EAST ZONE.